

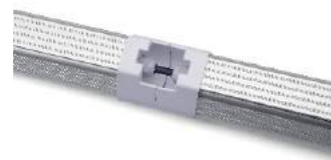
LED TRIPROOF LIGHT



Linkable LED Tri-proof Light

Features

- IP65 waterproof/dust proof/explosion proof/IK08
- 0.6m, 1.2m and 1.5m LED linear tri-proof light
- Linkable design for long connection solutions
- Surface mounted or pendant installation options
- Pure aluminum alloy with superior heat dissipation
- Driver quick replacement design for easy maintenance
- 0-10V Dimmable/DALI Dimmable/Microwave Sensor/Emergency



Linkable Series



Specifications



Item No.	Wattage (W)	Voltage (V)	Luminous Flux	CCT (K)	CRI (Ra)	Beam Angle	PF	Dimensions (mm)	IP
SO-TRI-L20W	20W	AC100-240V	2000lm	2700-6500K	80	120°	>0.9	L600xW86xH74	IP65
SO-TRI-L40W	40W	AC100-240V	4000lm	2700-6500K	80	120°	>0.9	L1200xW86xH74	IP65
SO-TRI-L60W	60W	AC100-240V	6000lm	2700-6500K	80	120°	>0.9	L1500xW86xH74	IP65

